

57.16

FITS UP TO A 50" TALL BOLLARD

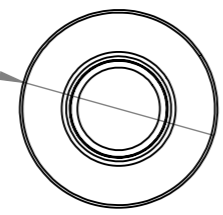
WRITE IN HEIGHT OF BOLLARD (INCHES) BETWEEN 36"-50"

36.13

43.16

FOR 6" DIA BOLLARD

Ø 10.29



THIS DRAWING AND ALL THE INFORMATION THEREON IS THE PROPERTY OF THE IDEAL SHIELD, IS CONFIDENTIAL AND MUST NOT BE MADE PUBLIC, NOR COPIED, NOR USED, TO THE DISADVANTAGE OF SAID IDEAL SHIELD AND IS SUBJECT TO RETURN ON DEMAND  
 COPYRIGHT 2003  
 IDEAL SHIELD

WRITE IN DESIRED COLOR

WRITE IN DESIRED QUANTITY

SPECS	
LIGHT SOURCE	6 ULTRA-HIGH LEDs
LUMEN OUTPUT	40 LUMENS
TEMPATURE RANGE	14-158 DEGREES F
BATTER TYPE	NiMh RECHARGABLE
BATTERY SIZE	2 x AA
BATTERY LIFE EXPECTANCY	1-3 YEARS (DEPENDING ON ENVIORMENT)
LIGHT TIME ON FULL CHARGE	12-20 HOURS
WATERPROOF RATING FOR LIGHT	IP68

\*AVAILABLE IN MUTIPLE COLORS  
 \*REPLACABLE BATTERIES

UNLESS OTHERWISE SPECIFIED: DIMENSIONS ARE IN INCHES SURFACE FINISH: TOLERANCES: LINEAR: ANGULAR:		FINISH:		DEBURR AND BREAK SHARP EDGES		DO NOT SCALE DRAWING		REVISION	
DRAWN		NAME		SIGNATURE		DATE		TRAFFIC SAFETY WAREHOUSE The Best in Safety for Less	
CHK'D								TrafficSafetyWarehouse.com	
APPV'D								(847) 966-1018	
MFG								DWG NO. UV-BL-02	
Q.A								A3	
				MATERIAL:				SCALE: 1:20	
				WEIGHT:				SHEET 1 OF 1	