

Signicade® MDX

PLASTICADE®

- Medium sized version of the popular Signicade® Deluxe
 - holds two 18"W x 24"H signs
 - narrow footprint
 - lightweight, 8 lbs.
 - easy to move
- Change signs in seconds
 - Quick-Change™ feature, signs easily slide in and out
 - no tape, Velcro®, or screws needed
 - use rigid sign material 3/16" thick or less
- "Stay Tabs" ensure signs stay securely in place
- No maintenance
 - all plastic, use indoors and out
- Can internally weight with sand
- Available in white and black



Patented slot design
-just slide in a sign



"Stay Tabs" keep sign
securely in place



Holds Two 18"W x 24"H Signs

Signicade® MDX

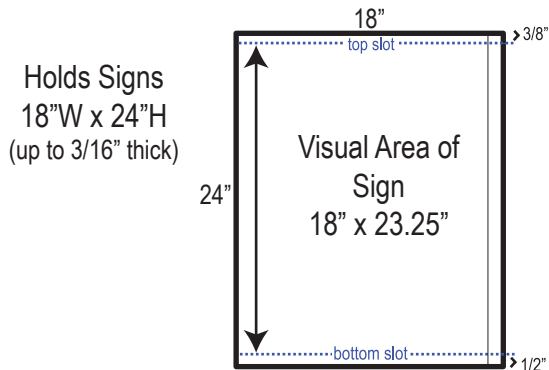
OUTSIDE DIMENSIONS : 31.5"H x 20"W x 2.5"D

DIMENSIONS OF RECESSED SIGN AREA: 23.25"H x 18.25"W

WEIGHT: 8 lbs.

COLORS: White and Black, Custom Colors Available

2 SIGNS PER FRAME



Sand Ballasting Instructions



Sand Fill Hole

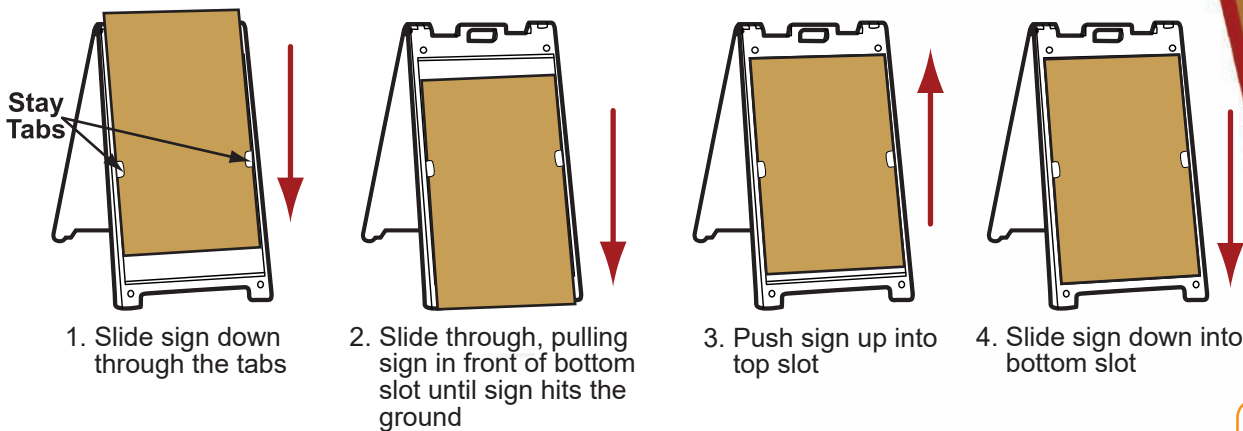
Each sign frame has two fill holes, one on each half of the frame.

Remove plug from fill hole and fill each hole with dry sand. Shake the sign frame to evenly distribute the sand at the bottom of the frame.

2 lbs. of sand per hole for a total of 4 lbs. per sign frame is recommended.

Play sand is suggested for ease of filling.

Sign Insertion Instructions:



MADE IN THE USA
US PATENT 7,337,569

PLASTICADE®



It's narrow footprint,
makes this a-frame
perfect for tight spaces.

TRAFFIC SAFETY WAREHOUSE
The Best in Safety for Less

TrafficSafetyWarehouse.com

(847) 966-1018