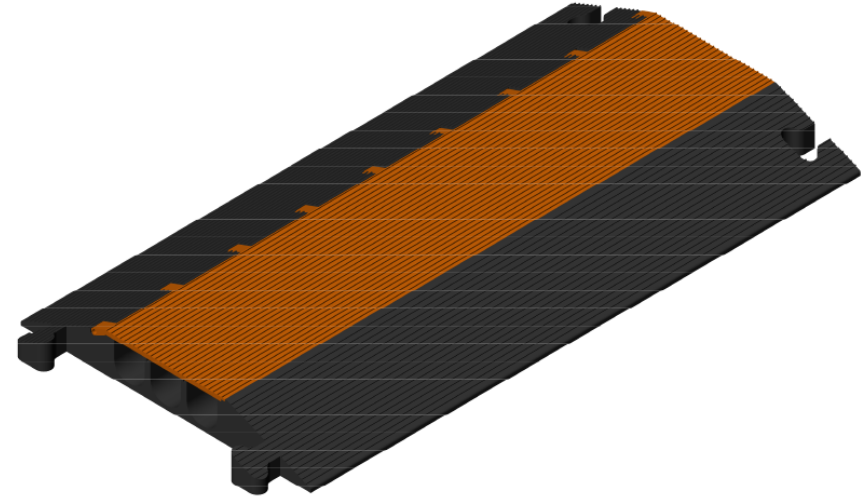
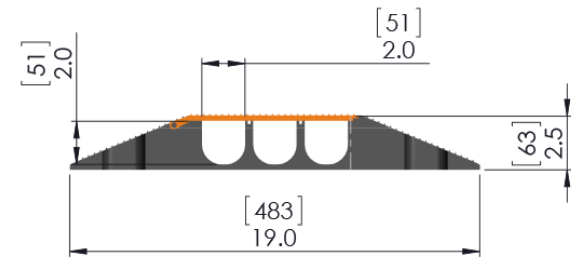
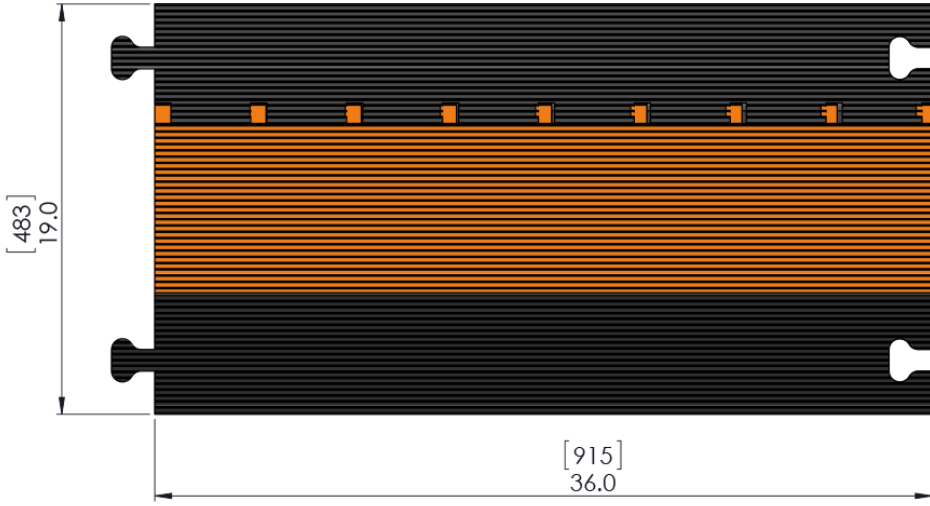


ZONE	REV	DESCRIPTION	DATE	APPROVAL
	1	PRELIMINARY RELEASE	1/4/2017	CN



Technical Data Sheet - MG3200		
Description	Imperial	Metric
Product - Length x Width x Height	36 x 19 x 2.5	915 x 483 x 63
Channel Size	2 x 2	51 x 51
Product Weight (lbs)	28.5	12.9
Load Capacity (lbs/axle)	25,000	11,340
Operating Temperature	-20°F up to +140°F	-30°C up to +60°C
Measurements are approximate	Imperial = inches & lbs.	Metric = mm & kg.

Standard Colors - Black Base/Orange Lid
 Material - Polyurethane
 Durometer - 90 Shore A Base +/- 5 --- 55D Shore D Lid +/-5
 Manufacture in USA

PROPRIETARY AND CONFIDENTIAL THE INFORMATION CONTAINED IN THIS DRAWING IS THE SOLE PROPERTY OF THE ES&C. ANY REPRODUCTION IN PART OR AS A WHOLE WITHOUT THE WRITTEN PERMISSION OF THE ELASCO IS PROHIBITED.	UNLESS OTHERWISE SPECIFIED: DIMENSIONS ARE IN INCHES TOLERANCES: FRACTIONAL: ± 1/32 ANGULAR: MACH: ± 1° BEND: ± 1° X = ± .1 XX = ± .01 XXX = ± .005	TRAFFIC SAFETY WAREHOUSE The Best in Safety for Less TrafficSafetyWarehouse.com (847) 966-1018
	UNLESS OTHERWISE SPECIFIED DIMENSIONS AND TOLERANCES PER ASME Y14.5M	
DRAWN: CN 1/4/2017 CHECKED: APPROVED: ELECTRONIC SIGNATURE ON FILE		