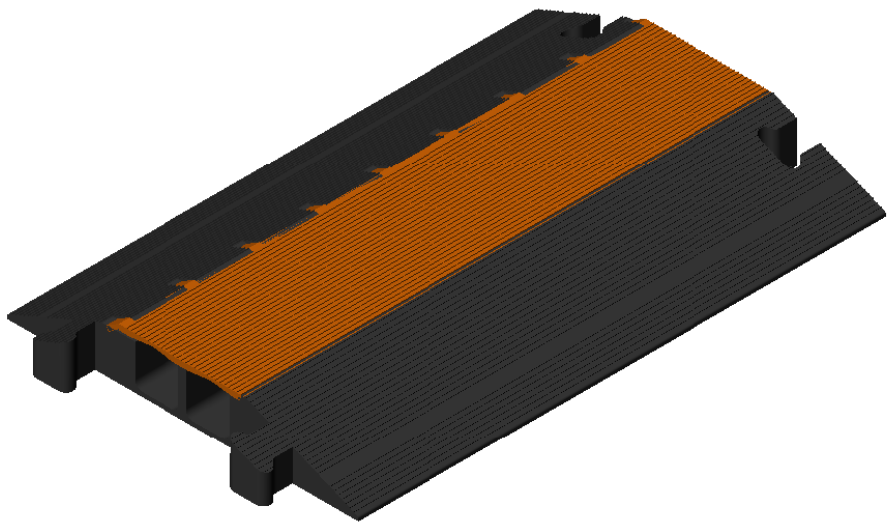
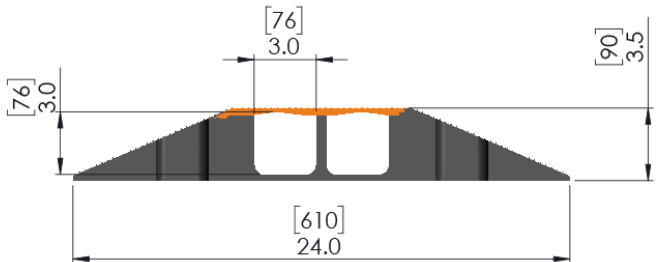
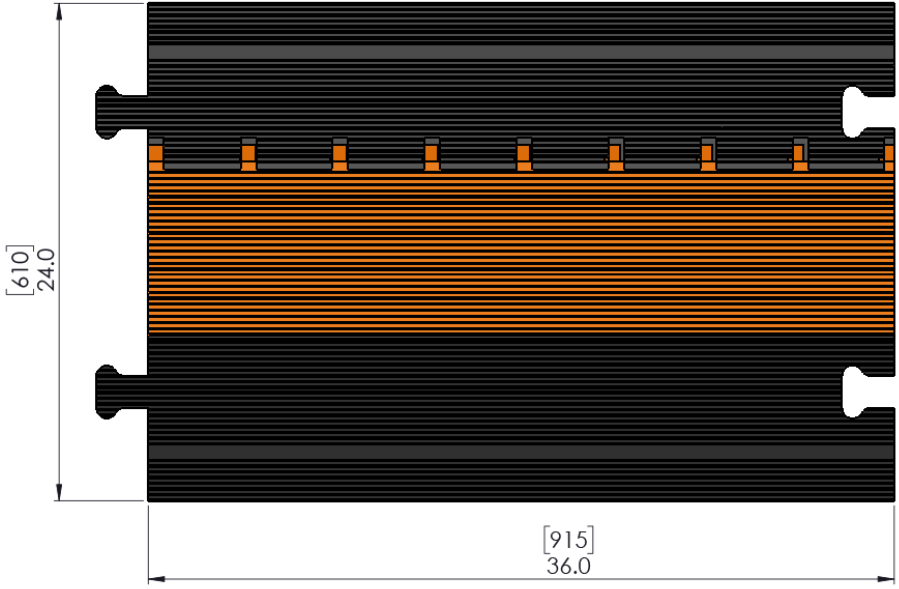


8 7 6 5 4 3 2 1

ZONE	REV	DESCRIPTION	DATE	APPROVAL
	1	PRELIMINARY RELEASE	1/4/2017	CN



D
C
B
A

D
C
B
A

Technical Data Sheet - MG2300

Description	Imperial	Metric
Product - Length x Width x Height	36 x 24 x 3.5	915 x 610 x 90
Channel Size	3 x 3	76 x 76
Product Weight (lbs)	33	15
Load Capacity (lbs/axle)	38,000	17,235
Operating Temperature	-20°F up to +140°F	-30°C up to +60°C
Measurements are approximate	Imperial = inches & lbs.	Metric = mm & kg.

Standard Colors - Black Base/Orange Lid
Material - Polyurethane
Durometer - 90 Shore A Base +/- 5 --- 55D Shore D Lid +/- 5
Manufacture in USA

PROPRIETARY AND CONFIDENTIAL THE INFORMATION CONTAINED IN THIS DRAWING IS THE SOLE PROPERTY OF THE ESAC. ANY REPRODUCTION IN PART OR AS A WHOLE WITHOUT THE WRITTEN PERMISSION OF THE ESAC IS PROHIBITED.	UNLESS OTHERWISE SPECIFIED: DIMENSIONS ARE IN INCHES TOLERANCES: FRACTIONAL: 1/32 ANGULAR: MACH ± 1° BEND ± 1° .X = ± .1 .XX = ± .01 .XXX = ± .005	TRAFFIC SAFETY WAREHOUSE <small>The Best in Safety for Less</small> TrafficSafetyWarehouse.com (847) 966-1018
	UNLESS OTHERWISE SPECIFIED DIMENSIONS AND TOLERANCES PER ASME Y14.5M	
SCALE: 1:6		SIZE DWG. NO. B MG2300 REV 1 SHEET 1 OF 1

8 7 6 5 4 3 2 1